

Course ♥ Care

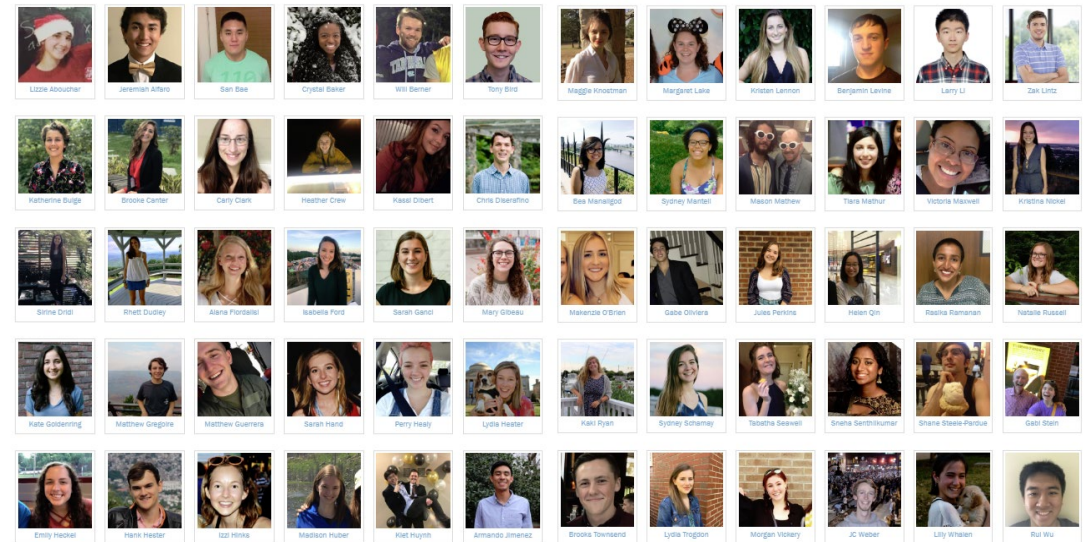
Support Platform /
"Patient Chart" Database

Interested? <http://bit.ly/course-care>

My Fall 2018 By the Numbers

Class	Class Title	Enrolled
COMP 101-001 (1360)	FLUENCY IN INFO TECHNOLOGY (Lecture)	346
COMP 110-001 (13889)	INTRO PROGRAMMING (Lecture)	295
COMP 110-002 (8830)	INTRO PROGRAMMING (Lecture)	289
COMP 290-140 (16600)	SPECIAL TOPICS IN COMPUTER SCI (Lecture)	10

940 Students



60 Undergraduate Teaching Assistants

Model	Students	Check-ins
1:1 Walk-in Appointments	N? (%?)	?
Review Sessions	N? (%?)	?

Course ♥ Care Interested? Sign-up! <http://bit.ly/course-care>

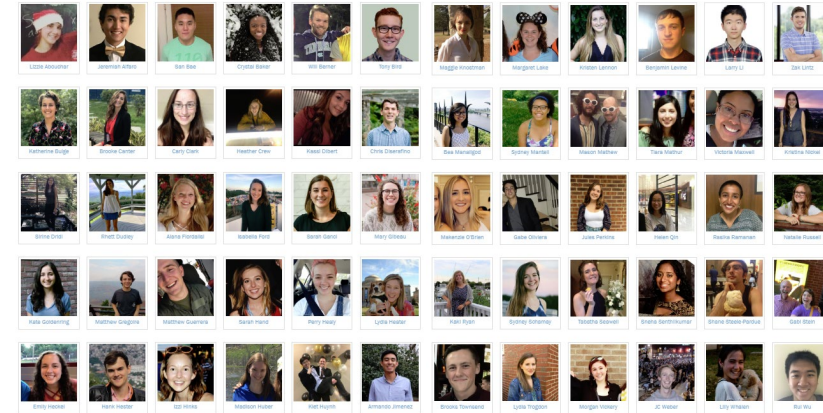
Questions I've lost sleep over...

- Why are students struggling? Are they making use of resources?
- How can we identify and reach out to high-risk students sooner?
- How can students in large classes get 1-on-1 help as needed?

My Fall 2018 By the Numbers

Class	Class Title	Enrolled
COMP 101-001 (1360)	FLUENCY IN INFO TECHNOLOGY (Lecture)	346
COMP 110-001 (13889)	INTRO PROGRAMMING (Lecture)	295
COMP 110-002 (8830)	INTRO PROGRAMMING (Lecture)	289
COMP 290-140 (16600)	SPECIAL TOPICS IN COMPUTER SCI (Lecture)	10

940 Students

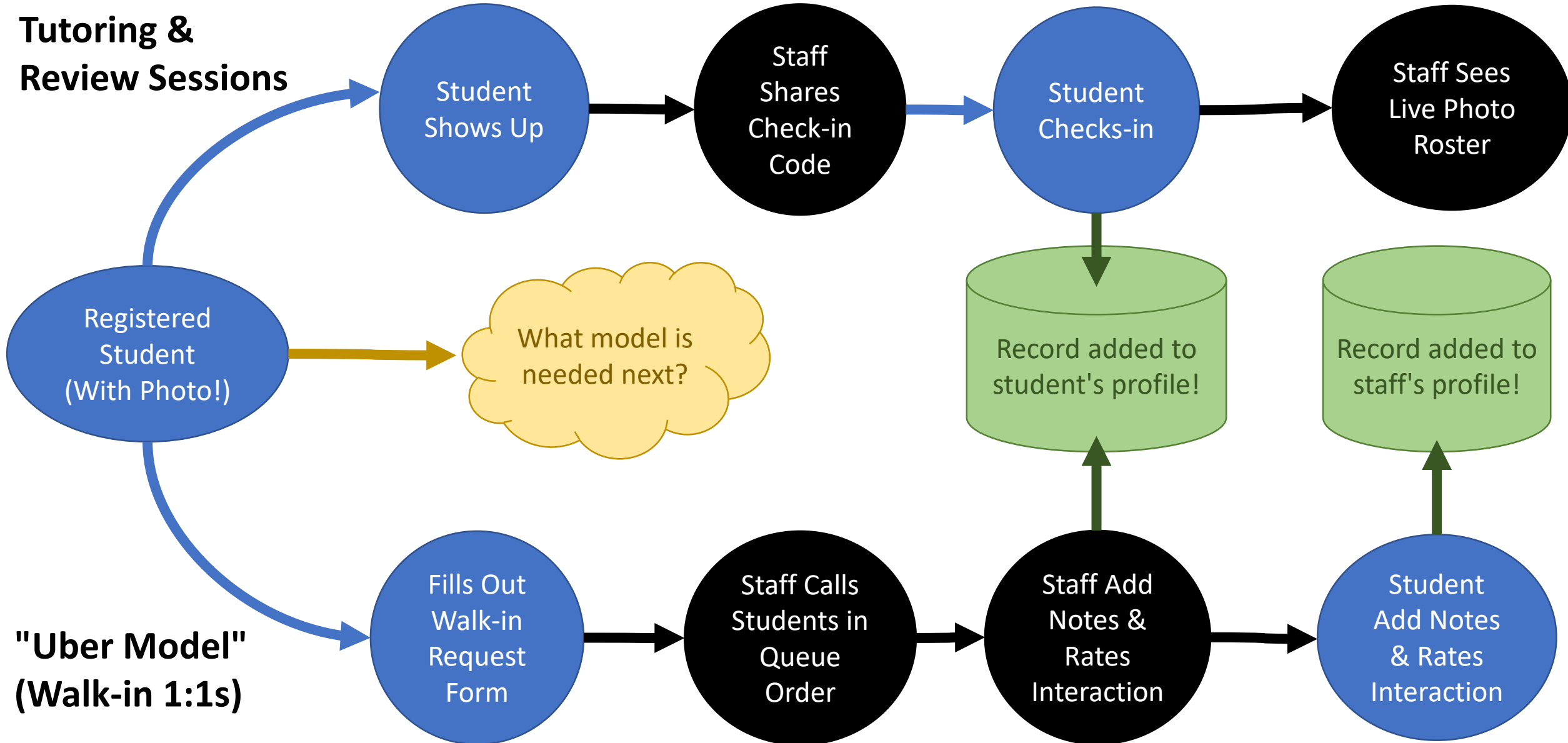


60 Undergraduate Teaching Assistants

Model	Students	Check-ins
1:1 Walk-in Appointments	611 (65%)	4,130 (915 contact hours)
Review Sessions	308 (33%)	651

Course ♥ Care

Support Models



Course ♥ Care

1. Know a student's face and complete course history when they e-mail or meet with you.
2. Enable TAs/LAs to flag at-risk students *before* it's too late.
3. Better trust, utilize, and track efficacy of TAs/LAs' performance.

Interested in using
Course.Care with your
students and teaching staff
Spring of 2019?

Go to:
<http://bit.ly/course-care>